

Developing a look

The process of look development for the web-series "Container"



Director M. Sveshnikov, cinematographer Ilya Averbakh, Start Production, 2021

REFERENCES | camera TESTS



ARRI ALEXA camera test with pre-grade  
Cooke Anamorphic



Reference Image  
"The Assassination of Jesse James by the Coward Robert Ford" | Test pre-grade for the Look

NEAR-SET Color grading with BLG

Checking the limits of the Look in an extreme conditions



Pre-grade on the set for a scene shot during magic hour



Pre-grade on the set for a scene shot in a dimmed lighting conditions



FINAL grade

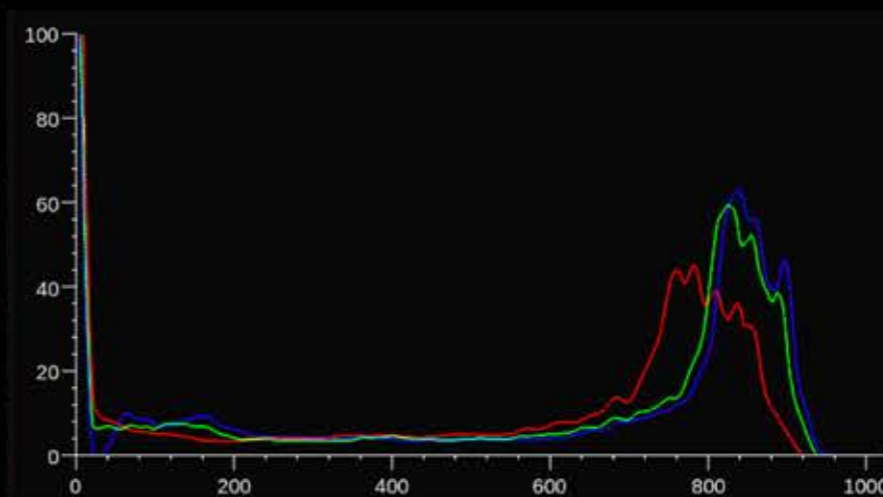


REFERENCE Image

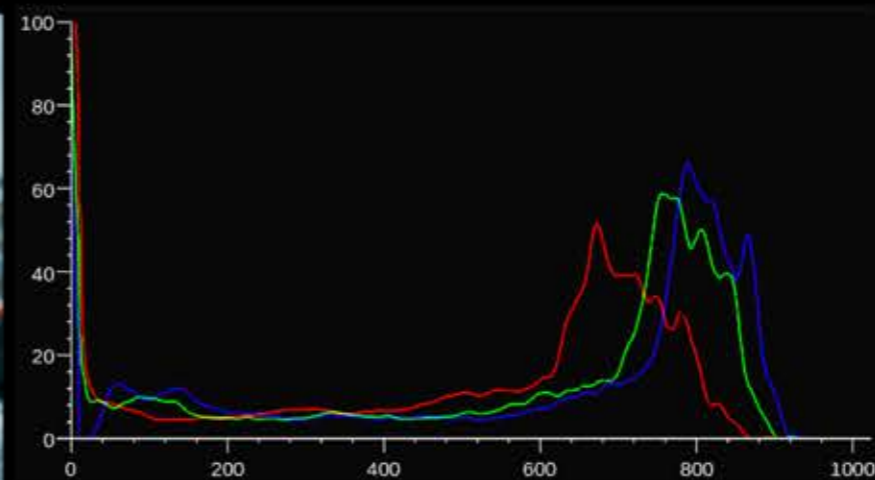
“The Assassination of Jesse James by the Coward Robert Ford”

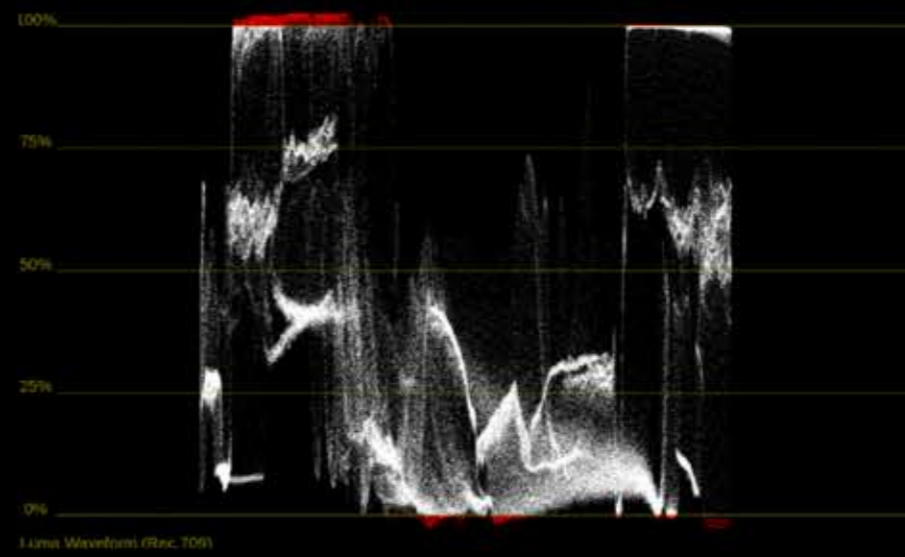
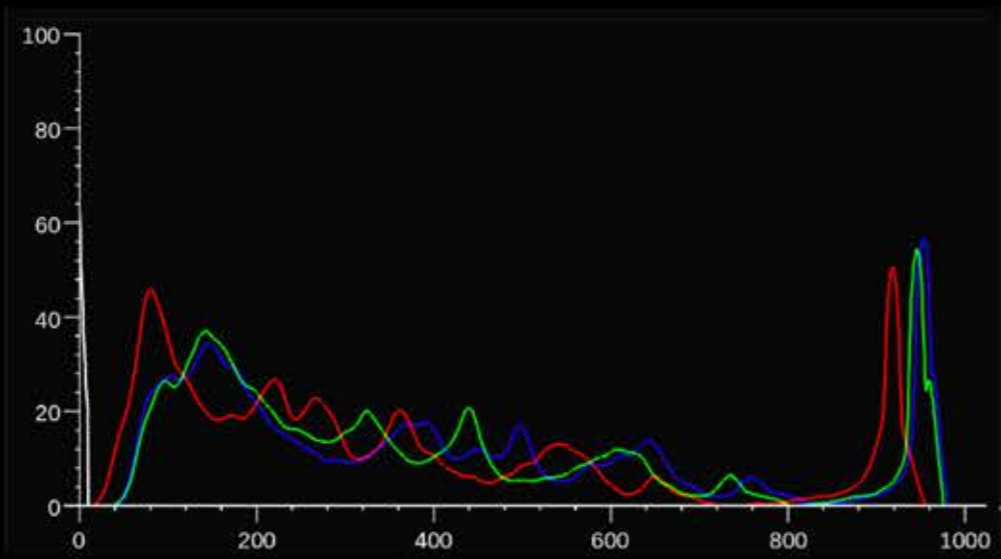


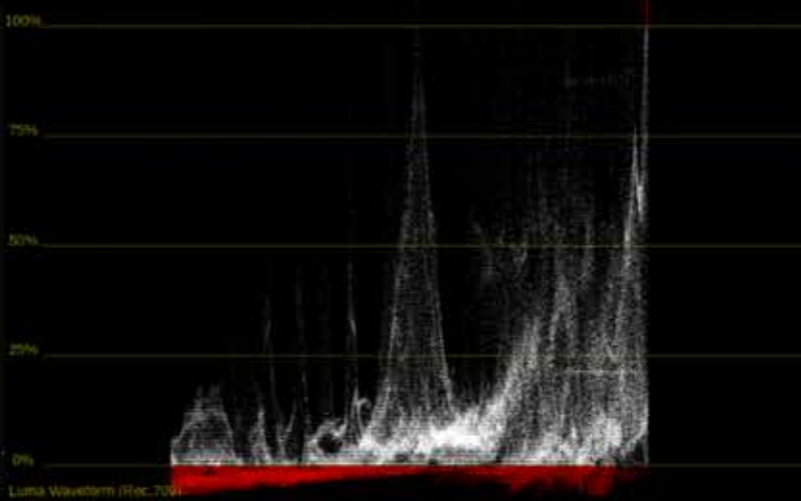
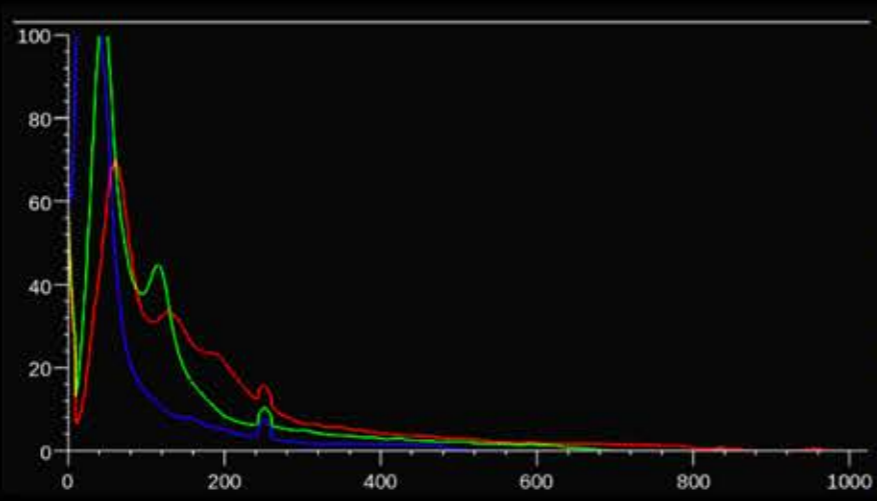
Without CDL



With CDL









More examples with final grade made on Baselight:







OLD FILM EMULATION  
LOOK development

References from DOP  
for the old film emulation





Reference image from DOP's LUT

Pregrade in Baselight



Camera test with the look

+actress and costumes

EXT



INT



Additional tests for changes in lighting conditions





## Near-set color grading



Sheena 667, feature, Mind the gap production, 2019

Near-set color grading.

Using pre-grades linked to the lab projection and to a desired image development.

+ Daylight on set, Red Helium footage with IPP2 new at that time color pipeline.

Custom film emulation for movie Vermiglio,  
Charades, 2024, release at Venice film festival 2024



Sony Venice 2



Kodak 7218

Creating a custom lut with film emulation for Sony Venice 2 based on camera tests shot on Kodak 7218.

A lut was created prior to production in collaboration with Florine Bel, color scientist at MPC, Paris

## +Texture management

Film and Sony Venice 2 footage comparison in order to mimic film characteristics

Without:  
Film/Sony



With:  
Film/Sony



Dailies+final grade was made on Baselight with textures and look applied

The End, feature, Final Cut for Real, Match factory, 2024  
Release soon at TIFF and Telluride

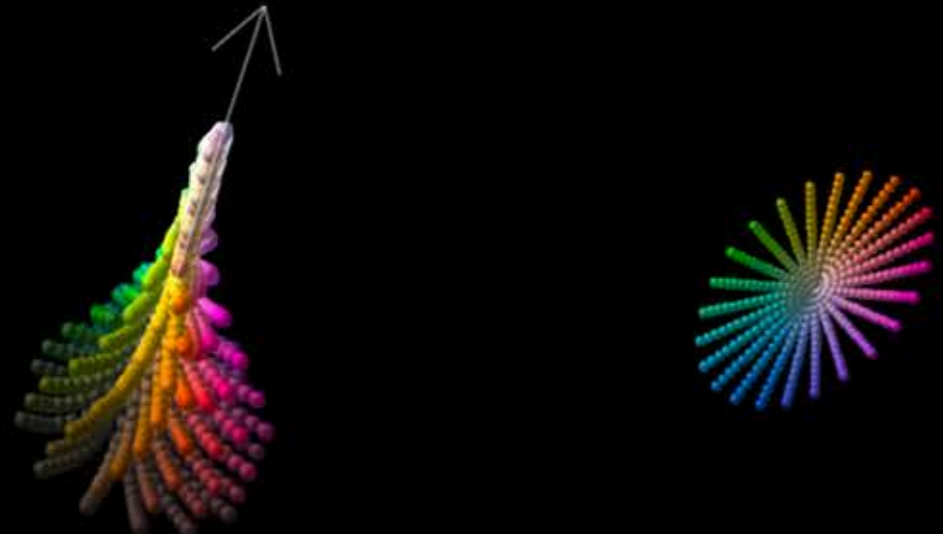


Costume+light+camera test prior to production

Look development on set+ Dailies  
+final grade



inspired on a desire of color separation in Technicolor iv strip



Look development using Chromagen in Baselight v6 allows to select hues in the costume/locations to develop unique looks